

HOW TO CREATE A PELEMAN PRINT COVER ON THE EPSON P900

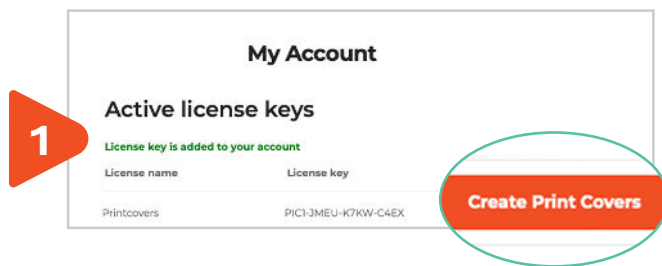
Register your Peleman user account

STEP 1- Go to <https://peleman.com>, Register to create an account or login into your existing account.

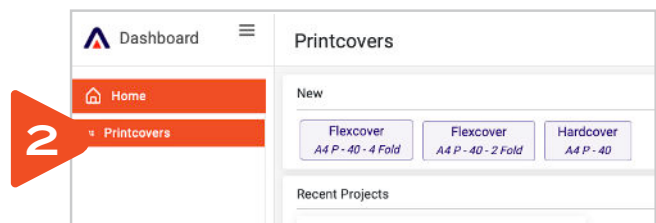
STEP 2 - Go to MY ACCOUNT > LICENSES > Enter the license key: **PIC1-JMEU-K7KW-C4EX**

STEP 3 - After activation this license is linked to your account, and you can proceed to the editor.

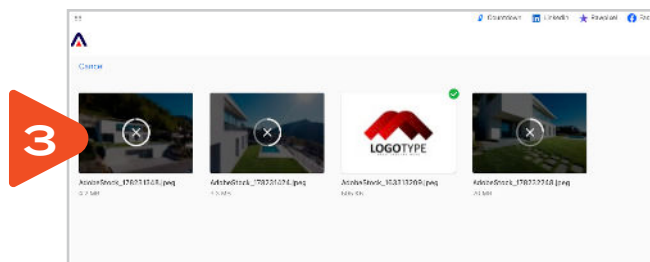
Create your own Print Cover



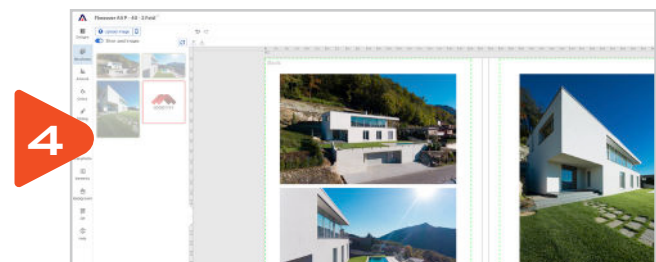
STEP 1- Click on "Create Print Cover".



STEP 2 - Choose the desired format.



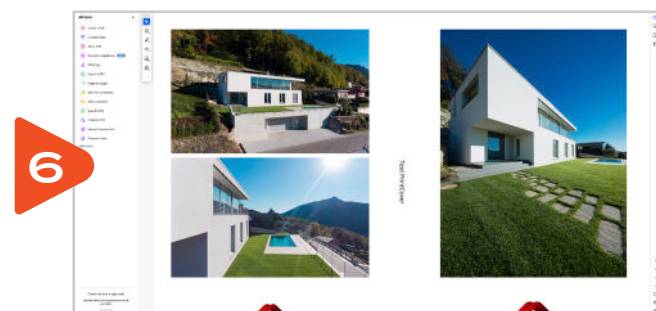
STEP 3 - Upload your photos or logo's



STEP 4 - Use the Peleman Image Editor to create your design.

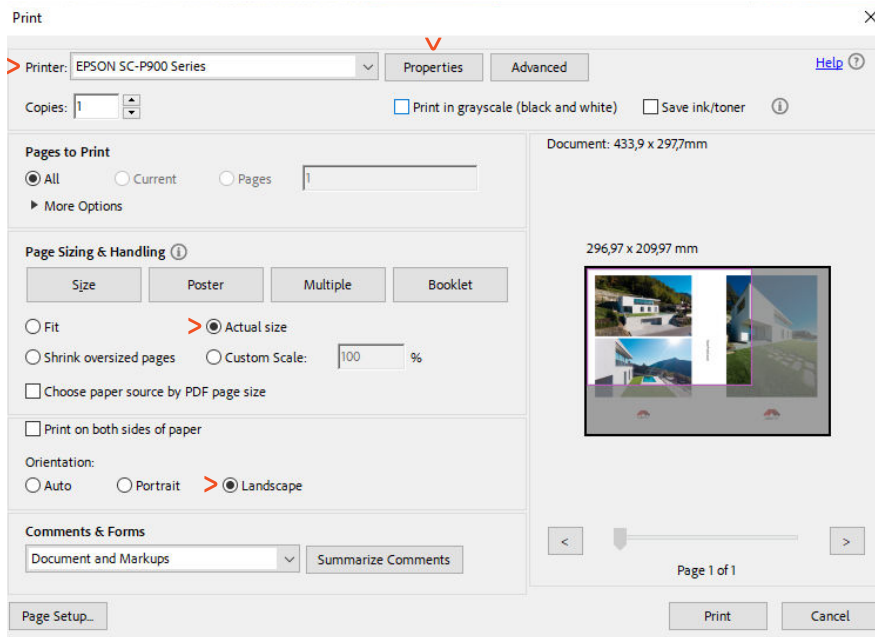


STEP 5 - The Peleman Image Editor will generate a printable PDF File.

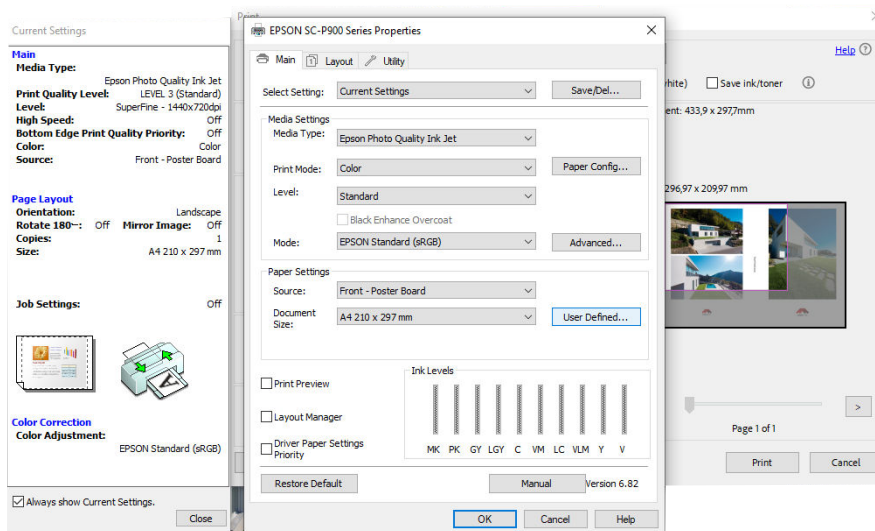


STEP 6 - Open your generated PDF File

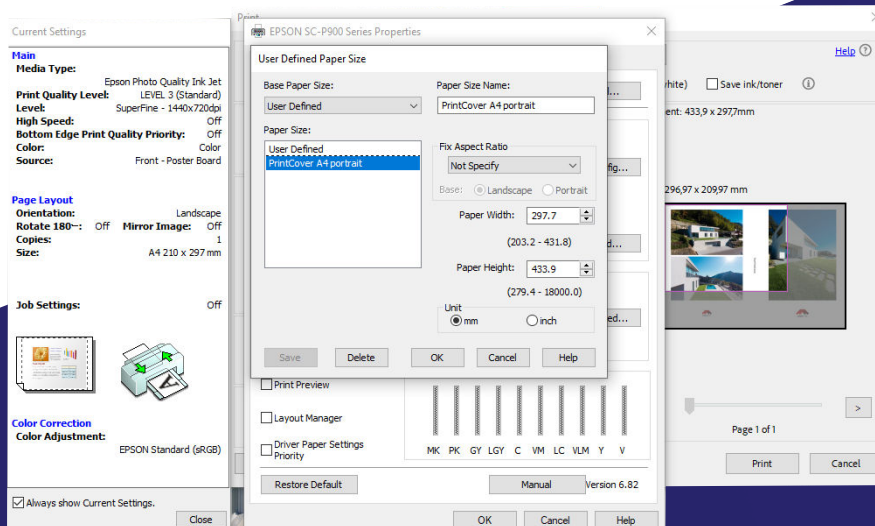
Printer Settings - Example on Epson P900



- > Select the correct printer, in our example Epson P900
- > Select **'Actual Size'**
- > Select **'Landscape'**
- > Select **'Properties'**



- > **'Media Settings'** > **'Media type'** > **'Matte Paper'** > **'Epson Photo Quality Ink Jet'**
- > **'Media Settings'** > **'Mode'** > **'Epson-standard (sRGB)'**
- > **'Paper Settings'** > **'Source'** > **'Front - Poster Board'**
- > Select **'User-defined...'**



- > Fill in the right measurements that are indicated
- > Give your paperformat a correct name. (For example: PrintCover A4 Portrait)
- > Press **'Save'**
- > Press **'OK'**

Print

×

> Press 'Print'

