

# PRINT-IN PROCESS

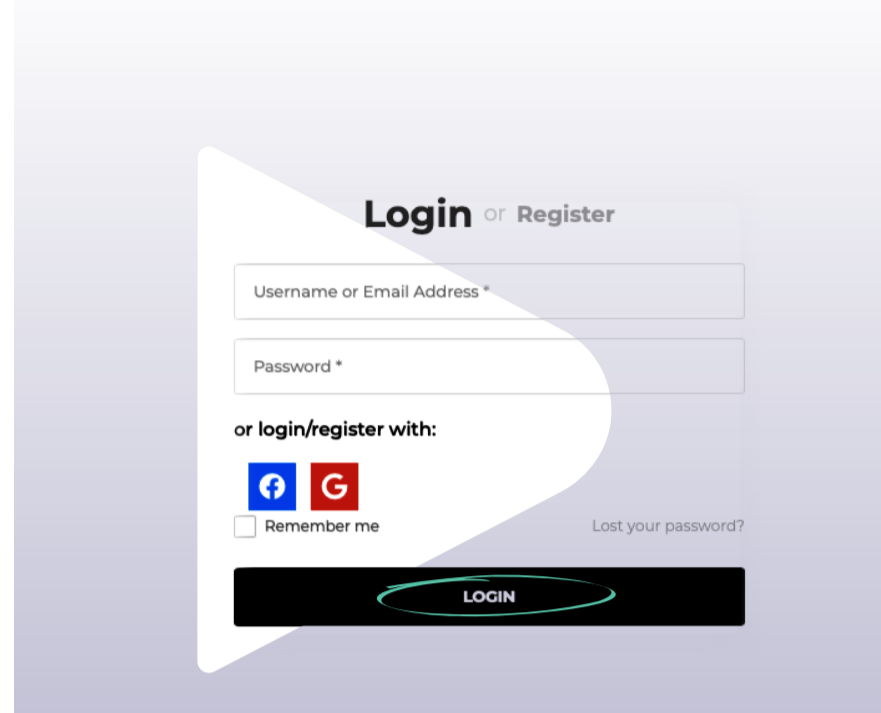
## ▶ WINDOWS USERS

1

### Create an account

#### ▶ account

- > Go to **Peleman.com** and create an account and choose your own password
- > Use the license key to activate the editor on your account. The License key is **PII-SKELR-XJERM-AGHJQ**
- > You will see the following options:



Print-In Metal Plates	PII-SKELR-XJERM-AGHJQ	<b>Create Print-In Plates</b>
	Manual Print-In Process	Download Manual Print-In Process
	Manual Installation Windows	<b>Download Manual Installation Windows</b>
	Manual Installation MacOS	Download Manual Installation MacOS
	Epson SC F100_500 Colour Profile for Print-In	Download Colour Profile

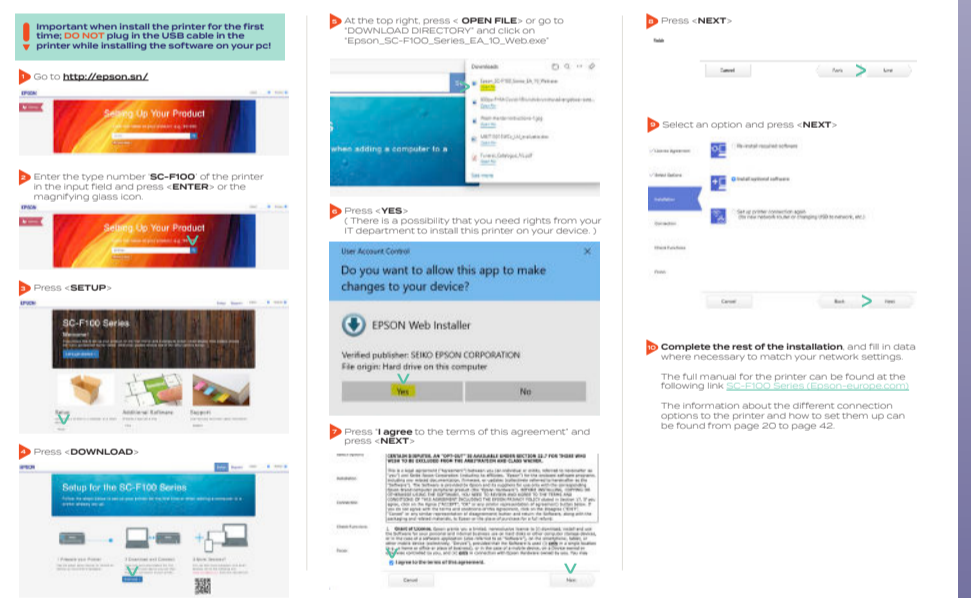
2

### Install the printer

#### ▶ on your computer

- > Click on 'Download Manual Installation for Windows (This manual will help you installing the sublimation printer the right way.

#### ▶ Print-In Printer PC



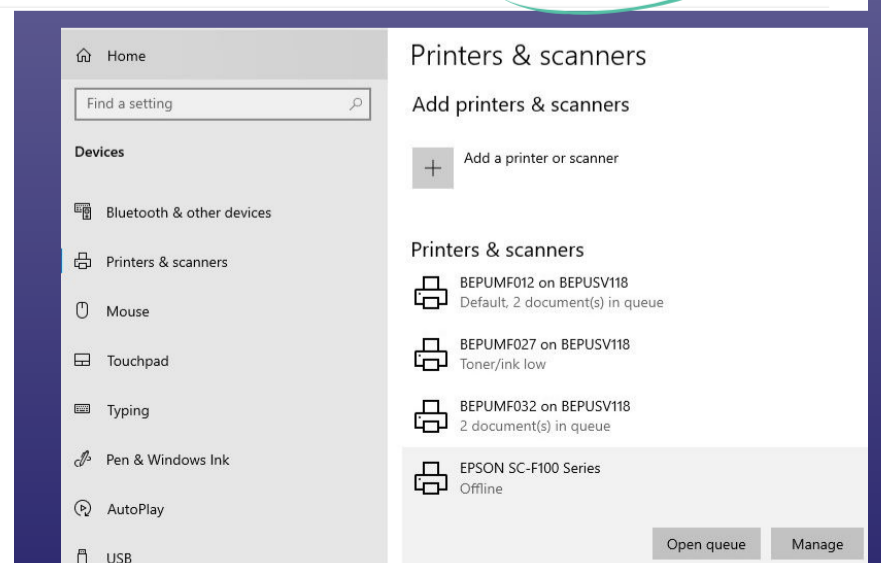
3

### Install the

#### ▶ Color Profile

- > Click on 'Download Colour Profile: Epson SC F100\_500 Colour Profile for Print-In' and save it on your computer.
- > Go to settings - Devices - Printers & Scanners - Epson SC F100

Print-In Metal Plates	PII-SKELR-XJERM-AGHJQ	<b>Create Print-In Plates</b>
	Manual Print-In Process	Download Manual Print-In Process
	Manual Installation Windows	Download Manual Installation Windows
	Manual Installation MacOS	Download Manual Installation MacOS
	Epson SC F100_500 Colour Profile for Print-In	<b>Download Colour Profile</b>



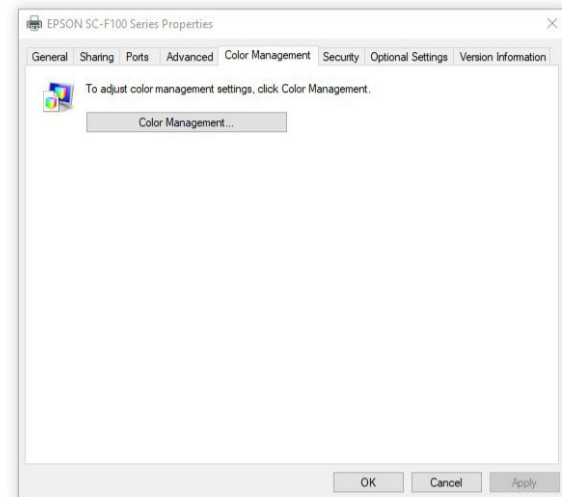
> Printer properties > Color Management

EPSON SC-F100 Series

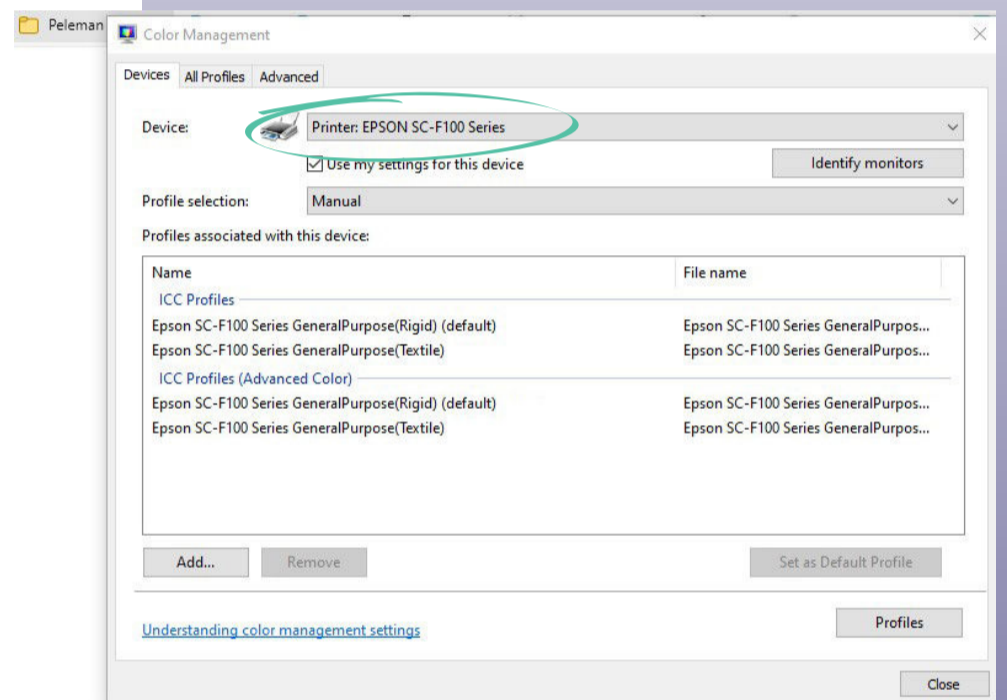
Manage your device

Printer status: Offline  
 Open print queue Set as default

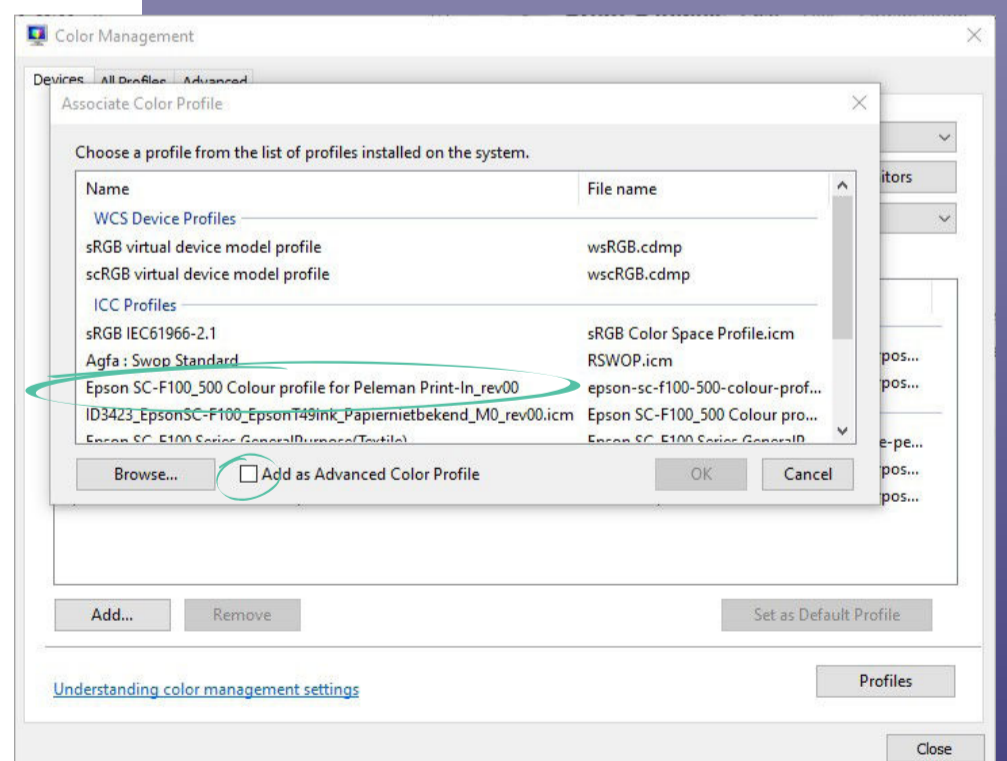
Print a test page  
 Run the troubleshooter  
 Printer properties  
 Printing preferences  
 Hardware properties



> Choose device: Epson SC-F100



- > Add... - Browse (Remember you saved this a couple of seconds ago on your computer) - Select profile +  Add as advanced Color Profile.
- > Remove the other profiles from your list.
- > Profile added



# 4

## Create your Print-In Plates

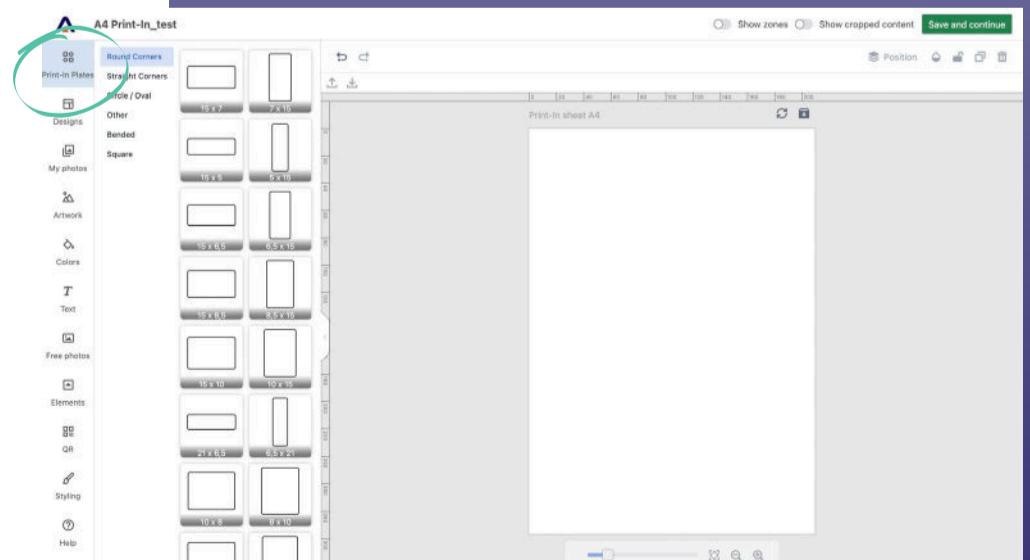
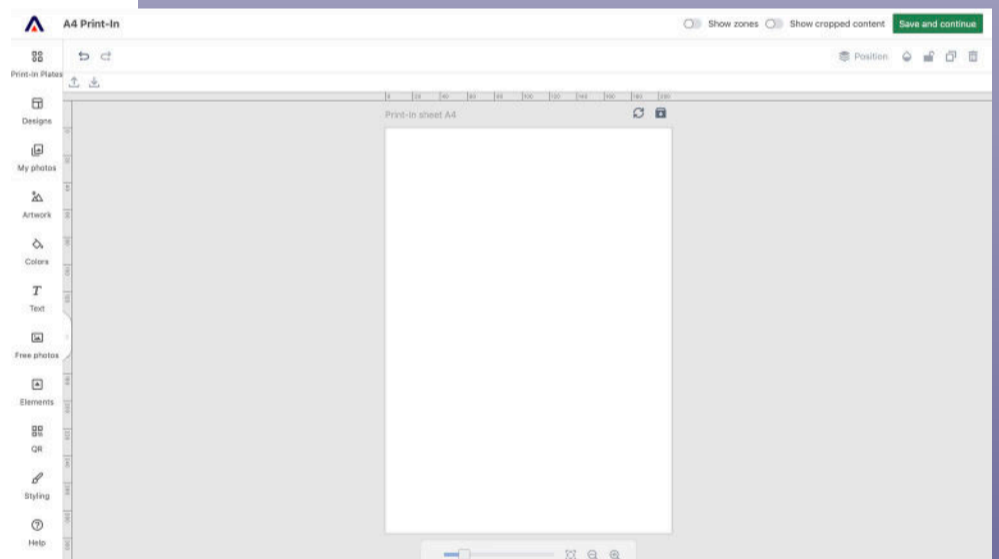
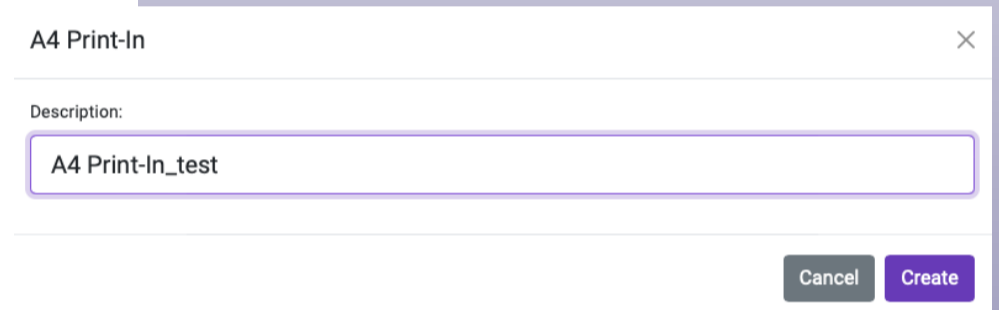
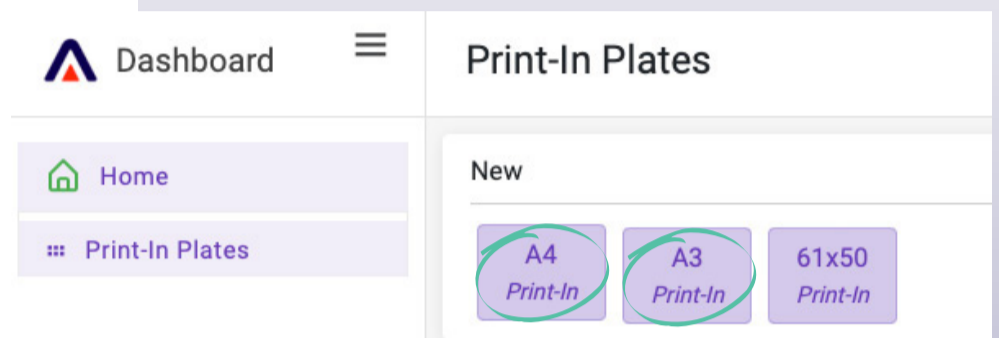
> Choose your format depending on your printer/press

> Give your project a name: \_test

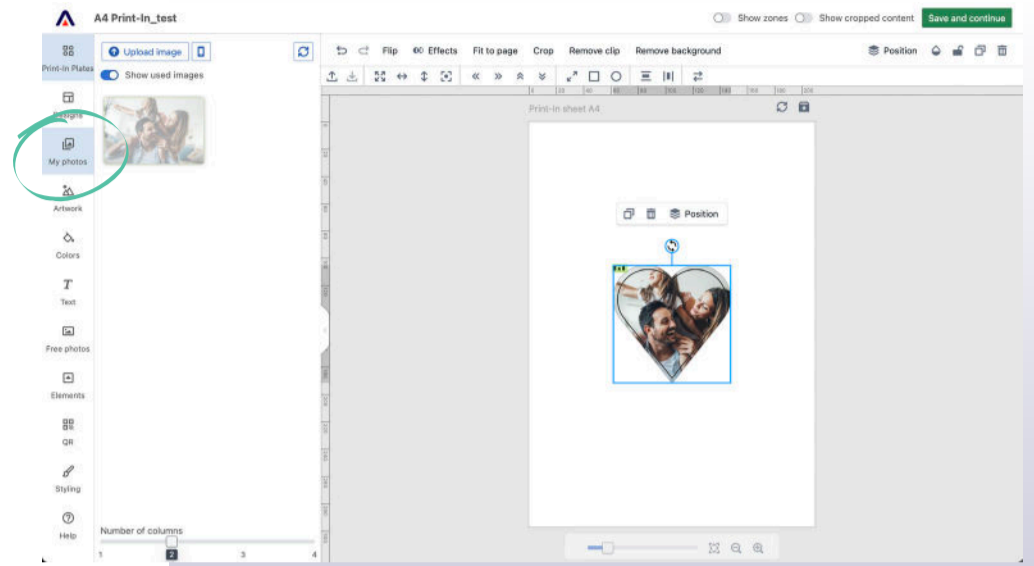
> This is your workspace for designing your Print-In Plates

> Choose your format here

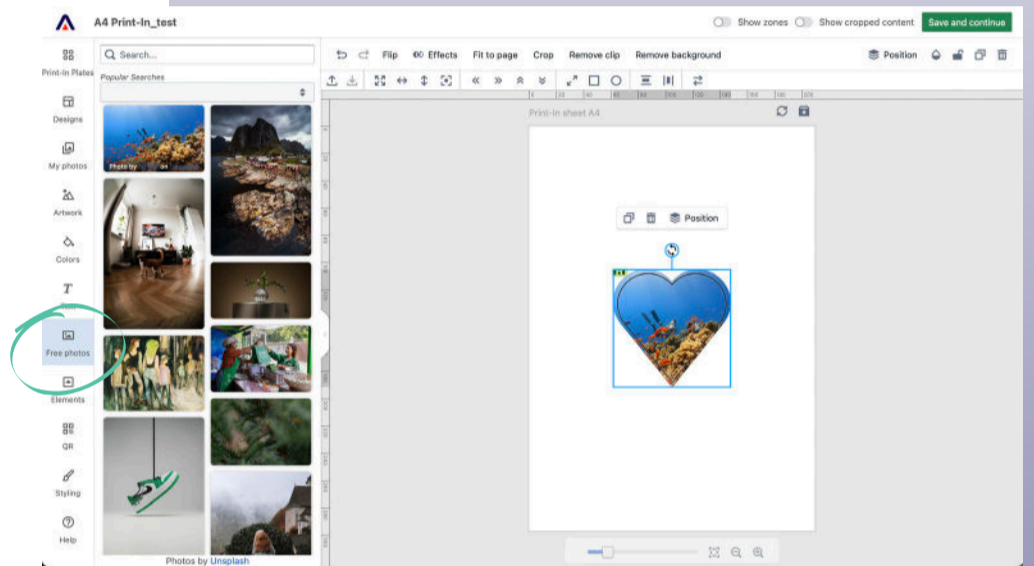
Print-In Metal Plates	P11-SKELR-XJERM-AGHJQ	<b>Create Print-In Plates</b>
	Manual Print-In Process	Download Manual Print-In Process
	Manual Installation Windows	Download Manual Installation Windows
	Manual Installation MacOS	Download Manual Installation MacOS
	Epson SC F100_500 Colour Profile for Print-In	Download Colour Profile



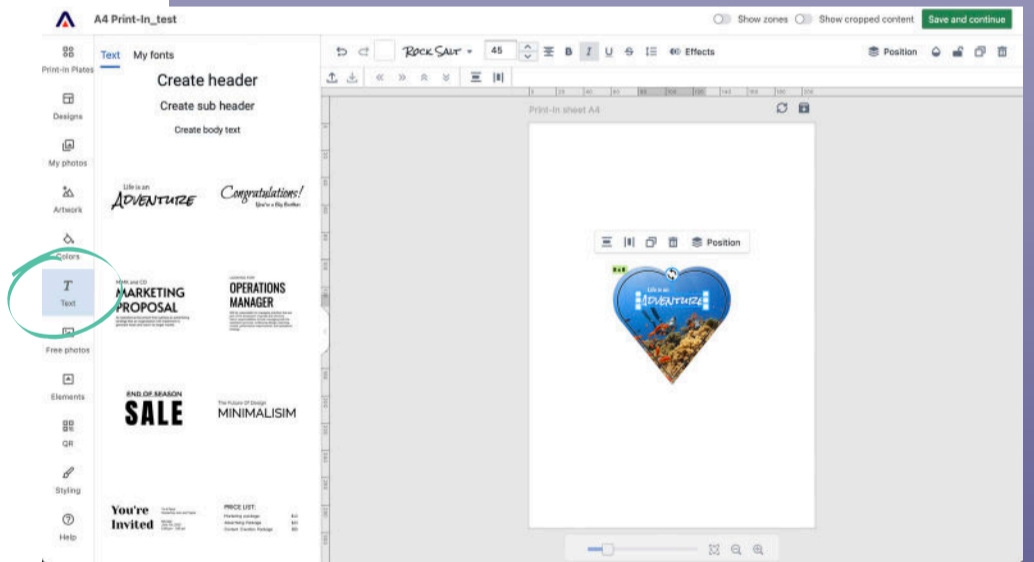
> Click on your desired plate and start designing with your own uploaded photo's



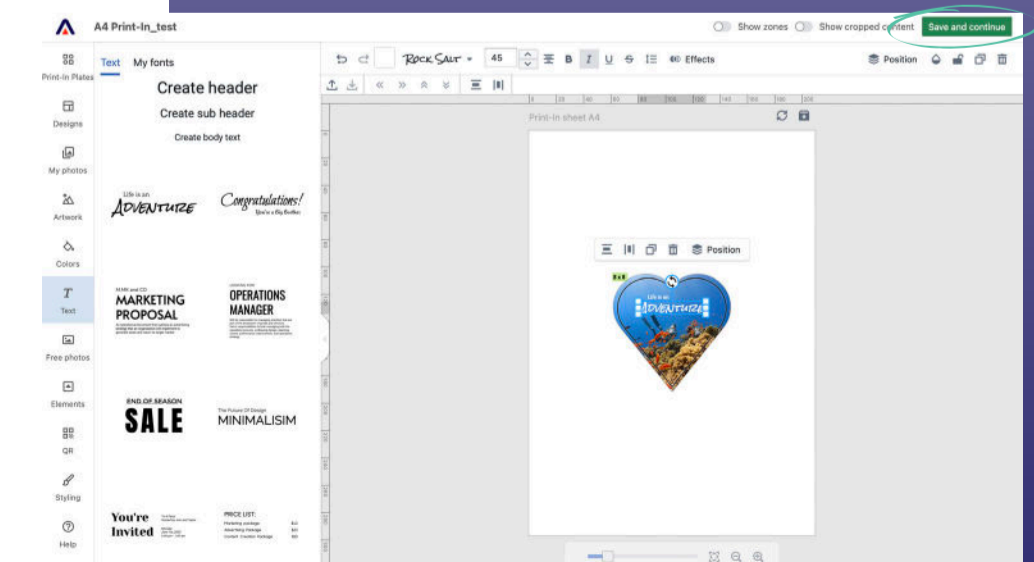
> Or use our free stock photo's



> You can add text, change size/fonts/colors...



> Click on Save and continue



> After a couple of seconds it will generate a pdf

> When it's done you will see the arrow, this means you can download the pdf. Open the PDF file in Acrobat Reader and you are ready to print!

- > Select - Epson SC F100\_500
- > Make sure you select: Color Handling > **Printer Color Management**
- > Always Print on 'Actual size'

