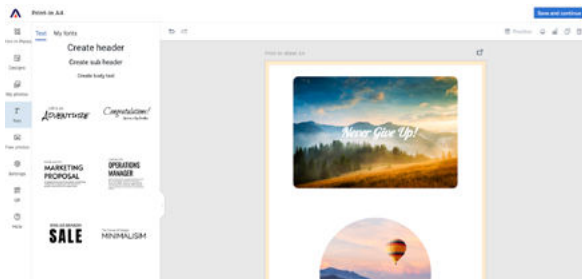


▶ User manual Print-In Process

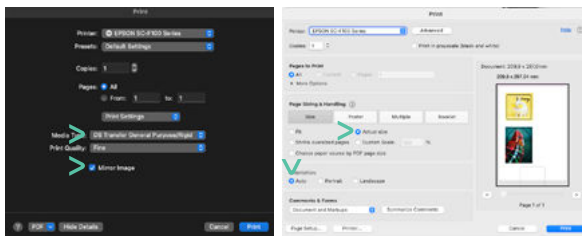
1 Put the USB-cable in your pc, check if there is paper in the drawer.
(Load the paper with the printable side face-down)

2 In the box in which your Print-In Plates arrived, you can find a leaflet with the license key to create your artwork on peleman.com.



3 Before printing check if the settings are on 'actual size' and 'automatic orientation'.

- > Print your artwork in mirror on Print-In Paper.
- > You can print more than one image on one page.



4 Press the "on" button on the right and heat up the Print-In Press up to **195° Celsius, and 140 seconds**.

5 **Remove the protective sheet** from the Print-In Plate



6 **Position the printed picture face up** on the press. Then, put the Print-In plate face down on the image.

Tip: By fixing the plate to the paper with **Print-In Thermal Tape**, unwanted shadow prints are avoided when opening the press.



7 Place a **protective paper** before closing the press to avoid the plate from sticking to the heating component.



8 Once the press has reached the right heating temperature, close it and wait for 140 seconds.

Warning: the press will be really hot.
Wait for the beeping sound before opening the press.

Make sure to use the **heat resistant gloves** for taking out the Print-In Plate.



9 Wait at least 1 minute before touching the plate, as this is very hot so it is best to wait a while.

Accessories

- Print-In Thermal Tape 20mm – 33mm
 - > SPPRINTINTAPE
- 1 pair heat resistant gloves
 - > SPPRINTINGLOVE
- Print-In Paper 100 sheets A4 / 87gr/m2
 - > PRIPAPER4
- Print-In Paper 100 sheets A3 / 87gr/m2
 - > PRIPAPER3
- Selfadhesive cork for print in circle 10cm
 - > ACSACORK09
- Selfadhesive magnet
 - > ACSAMAGO20
- Selfadhesive rubber for print in circle 10cm
 - > ACSARUBBER09
- Print-In Double Sided tape for outdoor use
 - > SPRINTINTAPEO



Results

