

Print-In Printer PC

Important when install the printer for the first time; DO NOT plug in the USB cable in the printer while installing the software on your pc!

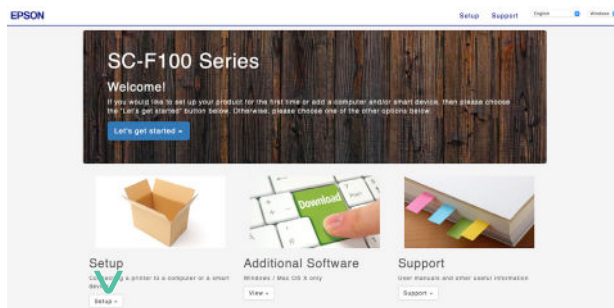
1 Go to <http://epson.sn/>



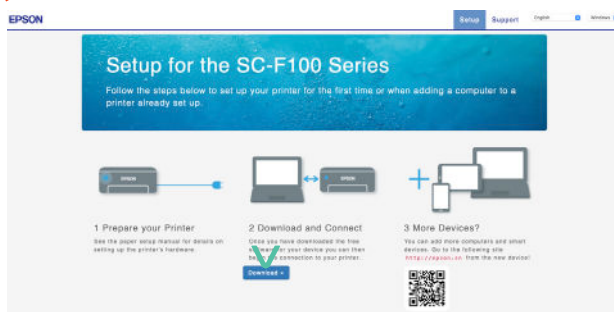
2 Enter the type number 'SC-F100' of the printer in the input field and press <ENTER> or the magnifying glass icon.



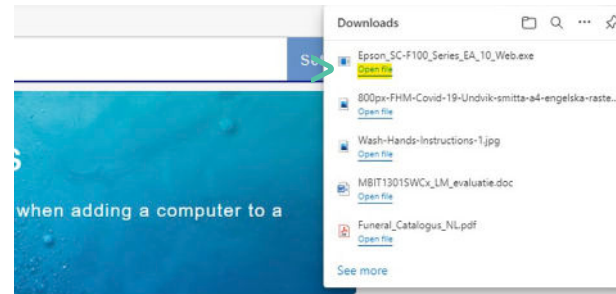
3 Press <SETUP>



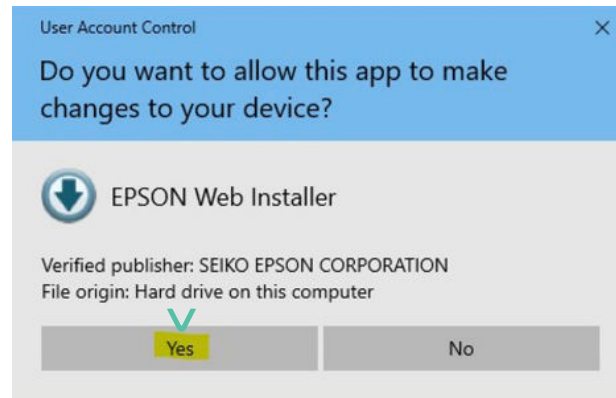
4 Press <DOWNLOAD>



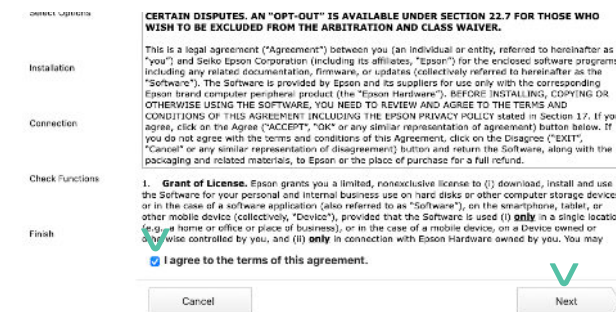
5 At the top right, press < OPEN FILE > or go to "DOWNLOAD DIRECTORY" and click on "Epson_SC-F100_Series_EA_10_Web.exe"



6 Press <YES> (There is a possibility that you need rights from your IT department to install this printer on your device.)



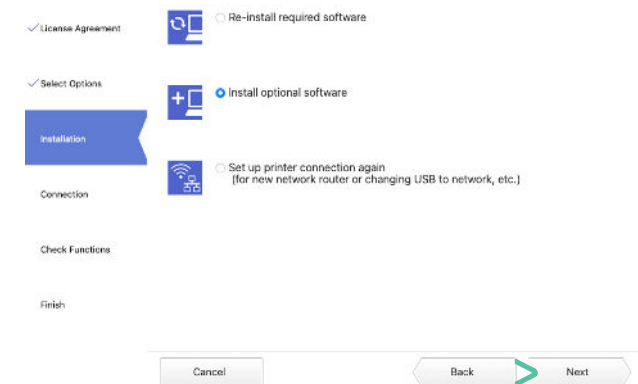
7 Press 'I agree to the terms of this agreement' and press <NEXT>



8 Press <NEXT>



9 Select an option and press <NEXT>



10 Complete the rest of the installation, and fill in data where necessary to match your network settings.

The full manual for the printer can be found at the following link [SC-F100 Series \(Epson-europe.com\)](http://SC-F100_Series_(Epson-europe.com))

The information about the different connection options to the printer and how to set them up can be found from page 20 to page 42.